

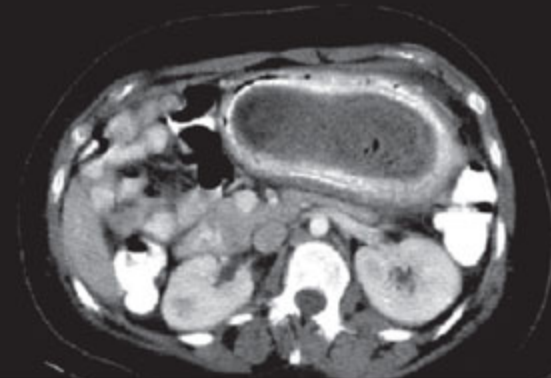
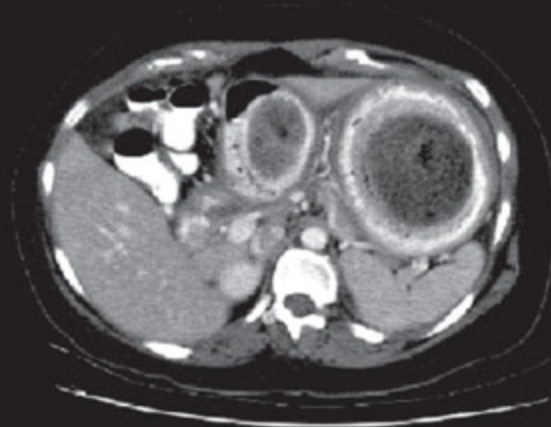
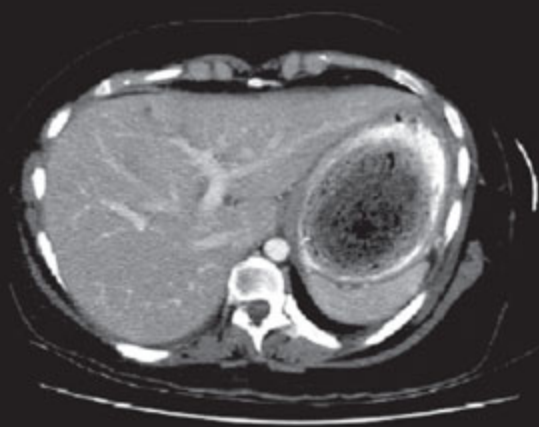


Department of
**Clinical
Radiology**



مستشفى السلام الدولي
Al Salam International Hospital

قسم الأشعة التشخيصية




Overview

Our department at Al-Salam International Hospital is proud to offer a complete range of imaging services for out-patient and in- patients. We have the most advanced digitalized imaging facilities produced by Leading manufacturers in the world. Our radiologists and technicians strive for excellence in patient care and they are committed to provide the most up-to-date technology and procedures to diagnose and treat our patients.

Mission

The department of clinical radiology is committed to offer the highest quality medical diagnosis through the latest advanced equipments and technology.

- MRI imaging of various parts of the body through two new sophisticated MR machines.
- Multi- Slice imaging of the body through sophisticated multi- slice CT machine.
- Digital Radiology & Fluoroscopy as well as DEXA imaging.
- Ultrasonography with 3D, 4D & color Doppler facilities.
- Advanced breast imaging & Interventional services for women.
- Advanced interventional radiological procedures by dedicated professional experts.
- In addition to providing the most sophisticated imaging services and interventional procedures, we understand that accurate and timely reports to the referring physician are so important.



**We offer the
following Medical
Imaging Services**



MRI

Magnetic Resonance Imaging (MRI) is a noninvasive medical test that helps physicians diagnose and treat medical conditions. MRI uses a powerful magnetic field, radio frequency pulses and a computer to produce detailed pictures of organs, soft tissues, bone and virtually all other internal body structures. The images can then be examined on a computer monitor, transmitted electronically, printed or copied to a CD. MRI does not use ionizing radiation (x-rays).

Detailed MR images allow physicians to better evaluate various parts of the body and determine the presence of certain diseases that may not be assessed adequately with other imaging methods such as x-ray, ultrasound or computed tomography (also called CT, MDCT or CAT scanning).


CT SCAN

CT scanning is a noninvasive medical test that helps physicians diagnose and treat medical conditions. CT scanning combines special x-ray equipment with sophisticated computers to produce multiple images or highlight specific areas inside the body. These cross-sectional images of the area being studied can then be examined on a computer monitor, printed or transferred to a CD.

CT scans of internal organs, bones, soft tissue and blood vessels provide greater clarity and reveal more details than regular x-ray exams. Using specialized equipment and expertise to create and interpret CT scans of the body, radiologists can more easily diagnose problems such as cancers, cardiovascular disease, infectious disease, appendicitis, trauma and musculoskeletal disorders.



WHAT IS DEXA SCANNING?

- Dual Energy X-ray Absorptiometry, (DEXA scanning) is currently the most widely used method to measure bone mineral density (strength).
 - It precisely documents small changes in bone mass and can be used to examine both the spine and extremities.
 - Doctors can predict the potential for fracture and osteoporosis through DEXA-Scan results.
- 



3D/4D ULTRASONOGRAPHY

The 3D Scan is a medical ultrasound technique that provides three dimensional static images of the fetus. While, the 4D provides three dimensional animated images of the fetus. With 3D and 4D scans, you're able to see the shape of the baby's mouth and nose, see him yawn or stick his tongue out, and get an idea of whether he looks more like Mum or Dad. These scans are just as safe as a normal scan, because the image is made up of sections of two-dimensional images converted into a picture. No harmful effects have been demonstrated.

The best time to have a 3D or 4D scan is when you are between 26 and 30 weeks into the pregnancy. It's natural that you will want to see your baby's face on the scan, but it may not be possible as it will depend on the fetal lying. Sometimes the doctor will ask you to go for a walk, or ask you to come back in a week when your baby may have moved to a better position.



BREAST ULTRASOUND

- A Breast ultrasound uses sound waves to make a picture of the tissues inside the breast (no radiation used).
- A Breast ultrasound is used to see whether a breast lump is filled with fluid (a cyst) or if it is a solid lump.





WHAT IS MAMMOGRAPHY?

- Mammography is a special type of x-ray imaging used to create detailed images of the breast.
- Mammography plays a major role in early detection of breast cancers.
- Mammography can show changes in the breast well before a woman or her physician can feel them.





Interventional Radiology

- The concept behind interventional radiology is to diagnose and treat patients using the least invasive techniques currently available in order to minimize risk to the patient and improve health outcomes. It precisely documents small changes in bone mass and can be used to examine both the spine and extremities.
- Interventional radiology traditionally involved the treatment of vascular disease, but has grown to include recently the treatment of spinal disorders.
- Guide to the effective use of minimally invasive, image-guided spinal techniques in the treatment of back pain.



BARIUM STUDY

Barium study is the study of the bowel system (small bowel or colon) using a barium mixture. It is important for you to be completely on an empty stomach to make this study successful. Please follow up the following instructions:

- Have a liquid diet (tea, coffee, custard and soup) for one day before your appointment.
- On the same day at 6:00 pm, take one small bottle of castor oil or any other laxative.
- You should be fasting on the study day.

For any inquiry or clarification, please call 2232000 ext. 2101
Hoping to you good health